



# Taylor Elite

Collection: The Elite Collection Floor Plan: Taylor Elite

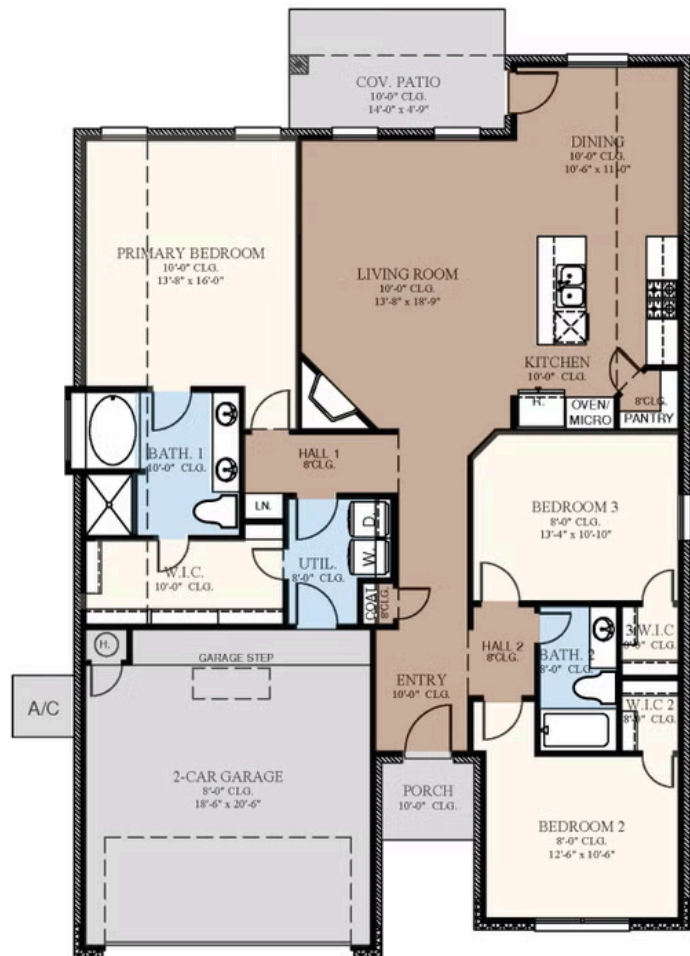
Square Feet: 1,689 (m.o.l.) Bedrooms: 3 Bathrooms: 2.0 Garage: 2 Car



☐ Elevation B

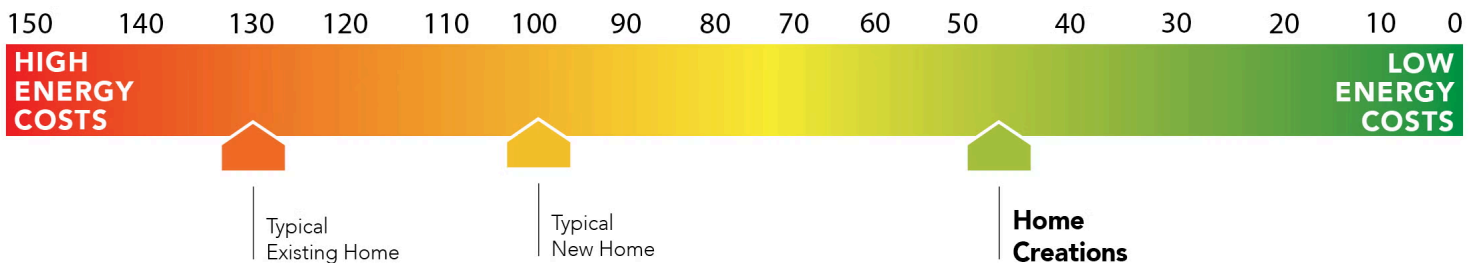


☐ Elevation C



This floor plan with a HERS Index Rating of 49 is:

- 51% more energy efficient than a typical new home
- 81% more energy efficient than a typical existing home





# Included Features

**Collection:** The Elite Collection **Floor Plan:** Taylor Elite

**Square Feet:** 1,689 (m.o.l.) **Bedrooms:** 3 **Bathrooms:** 2.0 **Garage:** 2 Car

## Safety

Installed smoke detectors  
Oriented Strand Board (OSB) exterior walls  
Tornado Straps that secure perimeter walls to rafters/roof

Carbon Monoxide detectors  
Anchor bolts that secure perimeter walls to foundation

## Bathroom

Undermount sinks  
Framed mirrors in all baths  
Light over Primary bathroom showers  
\*Schluter-KERDI Shower System behind all shower walls  
2 cm granite or quartz bathroom countertops with 4" backsplash

Ceramic tile floor  
Price Pfister® bathroom faucet  
Steel tub with tiled walls in secondary bathroom(s)  
Tiled shower and tile-surrounded garden tub in Primary bath

## Energy-efficiency

LED lights throughout  
Continuous eave roof ventilation  
R-8 Perimeter foam insulation at slab  
Up to 96% efficient tankless water heater  
R-15 blown-in insulation in external walls. Excludes garage  
Sill seal foam gasket used under exterior framing, against concrete, to reduce air loss

Radiant barrier roof decking  
R-44 blown-in insulation in attic  
R-8 Insulated and mastic sealed A/C ducts  
Gas heating 96% high efficiency furnace & duct work  
Polycel caulking around windows, doors and joints (energy efficient caulking package)  
Low-e Thermalpane tilt-in vinyl windows with screen (U-Factors of .30 or less & SHGC Coefficient with argon gas of .26 or less)

HERS Index Energy Efficiency Rating performed twice by 3rd party licensed inspector (every home is tested; score varies per plan & home permit date)

## Construction / Plumbing / Electrical / Mechanical

Copper electrical wiring  
6 mil poly moisture barrier under slab  
Electric dryer connection in utility room  
Heat-taped condensation lines (attic only)  
15.2 SEER electrical central air conditioning  
\*Air and moisture barrier DUPONT TYVEK HOMEWRAP with 10-year warranty

Sheetrock screwed to studs/walls  
\*Uponor AquaPEX tubing for water lines  
Enhanced modified slab on grade foundation  
Protective ground fault interrupter circuits  
Exterior 2 x 4 stud-grade lumber walls (16" on center)  
\*Atlas Pinnacle HP42 130 MPH class 3 impact rated shingles with Scotchgard with lifetime limited warranty

Exterior to interior CAT 5e outlet in front coat closet (RG6 Quad-shield cable wiring) (Homes permitted after November 1, 2024)

## Exterior Finishes

Full sod  
8/12 roof pitches  
Elite landscape package with stone border  
2 Woodford freeze-proof exterior water spigots  
Minimum of 3 exterior waterproof electrical outlets

Covered patio  
Enhanced exterior accents  
Brick mailbox with cast stone address block  
Guttering over entry and AC pad (vary per plan)  
Brick exterior with partial siding (varies per plan)

## Warranties

Termite company's 5-year warranty  
RWC New Home limited 10-year warranty  
Manufacturer's lifetime limited shingle warranty

Builder's limited one-year warranty  
Manufacturer's limited appliance warranty  
Manufacturer's limited heating & cooling units warranty

## Inspections / Engineering

All foundation & frame designs reviewed and stamped by 3rd party state-certified engineer.

HERS Index energy efficiency rating inspection performed twice by 3rd party licensed inspector (every home is tested; score varies per plan & home permit date)

## Smart Home Features

Ecobee® Programmable, Wifi-Enabled, Thermostat with Heat/Cool Auto mode  
Kwikset door hardware, including Smartkey functionality at all exterior doors  
Electric vehicle charging plug ( 220V 50Amp service; homes permitted after 01/01/2024)

2 Electrical outlet w/dual USB ports in kitchen (permits after 03/01/2024)  
2 Electrical outlet w/dual USB ports in primary bedroom (permits after 03/01/2024)  
Deako Smart Package (2 smart switches, 2 smart dimmer switches, and 1 simple motion sensor switch) (Homes permitted 11/1/24)

## Garage

Pull-down attic access in garage (per plan)  
Wifi Enabled Garage Door Opener with 2 remotes (2-car garages only)

Finished 2-car garage with wall texture, trim and paint

\* Features subject to availability.

Due to constant updates and revisions of our plans, your home may vary slightly from the designs features here. Please consult your New Home Consultant for details.





# Included Features

**Collection:** The Elite Collection **Floor Plan:** Taylor Elite

**Square Feet:** 1,689 (m.o.l.) **Bedrooms:** 3 **Bathrooms:** 2.0 **Garage:** 2 Car

## Interior Finishes

Square corners  
3" paint grade casing  
Ventless gas log fireplace  
Rocker switches (homes permitted after 5/1/23)  
10' seasonal storage in primary closet (select plans)  
Possible finishes include Satin Nickel, Matte Black, or Oil Rubbed Bronze  
Raised 10' ceiling in living areas and Primary bedrooms (trays 9') (on certain single story plans)  
Enhanced light package including chandelier, island pendants, coach lights and vanity lights (varies per plan)

Hand textured walls  
5" paint grade baseboard  
Ceramic tile floor in baths and utility  
Deako Rocker Switches (Homes permitted after 11/1/24)  
Insulated entry door with glass insert (panel style may vary)  
Standard wood-look tile selections in living room, dining, kitchen, entry and hall.  
Ceiling fans in living room and primary bedroom (Box rated and wired for ceiling fans in all other bedrooms)

## Kitchen

\*Price Pfister® kitchen faucet  
Water line for refrigerator icemaker  
Kitchen hardware for cabinets and drawers  
LED Under Cabinet Lighting (on selected plans)  
1/3 horsepower sink garbage disposal w/ air switch  
Single basin undermount farm sink (stainless steel)  
\*Samsung stainless steel dishwasher, built-in microwave, drop-in gas cooktop, Wifi enabled electric oven with 36" 5-Burner Gas Cooktop

Decorative vented hood to outside  
3cm granite or quartz kitchen countertops  
Tiled backsplash up to the bottom of cabinets  
Pendant lights over bar or island (select plans)  
Extended cabinet and countertop depth 2" at cooktop  
Soft-close 36" upper kitchen wood cabinets (painted/stained)

\* Features subject to availability.

Due to constant updates and revisions of our plans, your home may vary slightly from the designs features here. Please consult your New Home Consultant for details.

