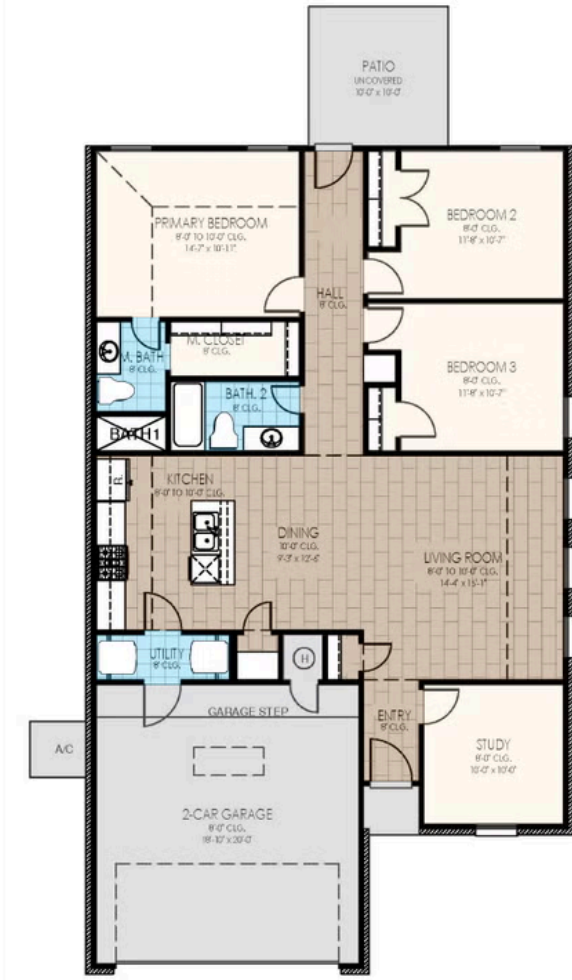




Maple

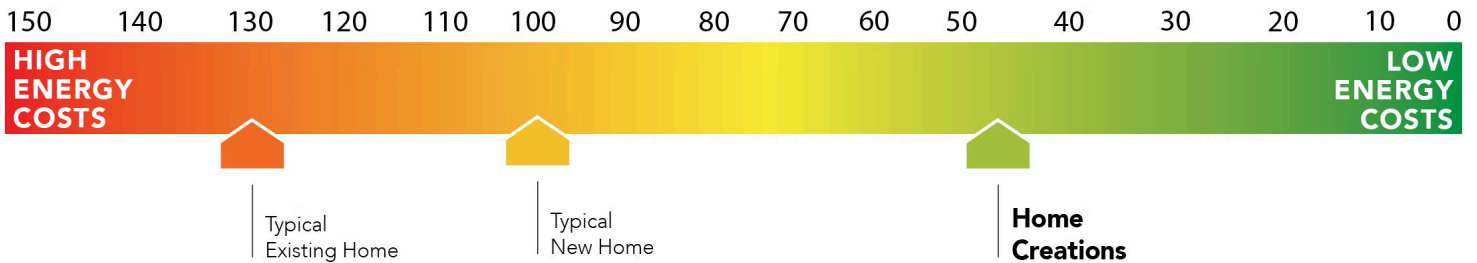
Collection: Village Collection Floor Plan: Maple

Square Feet: 1,491 (m.o.l.) Bedrooms: 3 Bathrooms: 2.0 Garage: 2 Car



This floor plan with a HERS Index Rating of 47 is:

- 53% more energy efficient than a typical new home
- 83% more energy efficient than a typical existing home



Floor plans' specifications, included features, options and elevations are subject to change.





Included Features

Collection: Village Collection Floor Plan: Maple

Square Feet: 1,491 (m.o.l.) Bedrooms: 3 Bathrooms: 2.0 Garage: 2 Car

Interior Finishes

Square corners
Hand textured walls
3" paint grade baseboard and casing
Ceramic tile floor in bathrooms and utility
Insulated entry door (panel style may vary)
Deako Rocker Switches (Homes permitted after 11/1/24)
Enhanced lighting package including chandelier and coach lights

Possible finishes include Satin Nickel, Matte Black, or Oil Rubbed Bronze
Raised 10' ceiling in living areas and Primary bedrooms (in single story plan)
Standard wood-look tile selections in living room, dining, kitchen, entry and hall
Wall-to-Wall plush cut loop berber carpet with 1/2" 6 lb. pad in all bedrooms and bedroom closets
Ceiling fans in living room and primary bedroom (Box rated and wired for ceiling fans in all other bedrooms)

Kitchen

*Price Pfister® kitchen faucet
Water line for refrigerator icemaker
2 cm granite or quartz kitchen countertops
Tiled backsplash up to the bottom of cabinets
1/3 horsepower sink garbage disposal w/ air switch

30" soft-close upper kitchen wood cabinets (painted/stained)
Single bowl stainless steel 8" deep under mount kitchen sink
Samsung stainless steel top control dishwasher, over the range microwave, and wifi enabled free-standing gas range

Safety

Carbon Monoxide detectors
Installed smoke detectors
Oriented Strand Board (OSB) exterior walls

Anchor bolts that secure perimeter walls to foundation
Tornado Straps that secure perimeter walls to rafters/roof

Bathroom

Undermount sinks
Ceramic tile floor
1.6 engineered marble countertops with 4" backsplash
Fiberglass shower / tub combo in all secondary baths

*Schluter-KERDI Shower System behind all primary shower walls
One piece 3x5 insert w/ tile surround enclosure in primary bath
*Price Pfister® bathroom faucet (choice of satin nickel or black)

Energy-efficiency

LED lights throughout
Radiant barrier roof decking
Continuous eave roof ventilation
R-44 blown-in insulation in attic
R-8 Perimeter foam insulation at slab
R-8 Insulated and mastic sealed A/C ducts
Up to 96% efficient tankless water heater
Gas heating 96% high efficiency furnace & duct work

R-15 blown-in insulation in external walls. Excludes garage
Polycel caulking around windows, doors and joints (energy efficient caulking package)
Sill seal foam gasket used under exterior framing, against concrete, to reduce air loss
Low-e Thermalpane tilt-in vinyl windows with screen (U-Factors of .30 or less & SHGC Coefficient with argon gas of .26 or less)
HERS Index Energy Efficiency Rating performed twice by 3rd party licensed inspector (every home is tested; score varies per plan & home permit date)

Construction / Plumbing / Electrical / Mechanical

Copper electrical wiring
Sheetrock screwed to studs/walls
6 mil poly moisture barrier under slab
*Uponor AquaPEX tubing for water lines
Electric dryer connection in utility room
Heat-taped condensation lines (attic only)
Enhanced modified slab on grade foundation
Protective ground fault interrupter circuits

15.2 SEER electrical central air conditioning
Exterior 2 x 4 stud-grade lumber walls (16" on center)
*Air and moisture barrier DUPONT TYVEK HOMEWRAP with 10-year warranty
*Atlas Pinnacle HP42 130 MPH class 3 impact rated shingles with Scotchgard with lifetime limited warranty
Exterior to interior CAT 5e outlet in front coat closet (RG6 Quad-shield cable wiring) (Homes permitted after November 1, 2024)





Included Features

Collection: Village Collection **Floor Plan:** Maple

Square Feet: 1,491 (m.o.l.) **Bedrooms:** 3 **Bathrooms:** 2.0 **Garage:** 2 Car

Exterior Finishes

Full sod
Village landscaping package
2 Woodford freeze-proof exterior water spigots
Guttering over entry and AC pad (vary per plan)

Minimum of 2 exterior waterproof electrical outlets
Brick exterior with partial siding (varies per plan)
Brick mailbox *may not be available in every community

Warranties

Termite company's 5-year warranty
Builder's limited one-year warranty
RWC New Home limited 10-year warranty

Manufacturer's limited appliance warranty
Manufacturer's lifetime limited shingle warranty
Manufacturer's limited heating & cooling units warranty

Inspections / Engineering

All foundation & frame designs reviewed and stamped by 3rd party state-certified engineer.

HERS Index energy efficiency rating inspection performed twice by 3rd party licensed inspector (every home is tested; score varies per plan & home permit date)

Smart Home Features

Wifi-Enabled Samsung Range
Ecobee® Programmable, Wifi-Enabled, Thermostat with Heat/Cool Auto mode
2 Electrical outlet w/dual USB ports in kitchen (permits after 03/01/2024)
Kwikset door hardware, including Smartkey functionality at all exterior doors
2 Electrical outlet w/dual USB ports in primary bedroom (permits after 03/01/2024)

Electric vehicle charging plug (220V 50Amp service; homes permitted after 01/01/2024)
Deako Smart Package (2 smart switches, 2 smart dimmer switches, and 1 simple motion sensor switch) (Homes permitted 11/1/24)

Garage

Pull-down attic access in garage (per plan)
Finished 2-car garage with wall texture, trim and paint

Wifi Enabled Garage Door Opener with 2 remotes (2-car garages only)