



Brooke

Collection: The Wellington Collection Floor Plan: Brooke

Square Feet: 1,876 (m.o.l.) Bedrooms: 3 Bathrooms: 2.0 Garage: 2 Car



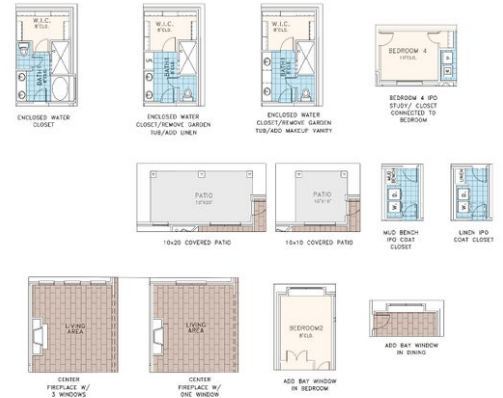
Elevation A



Elevation B

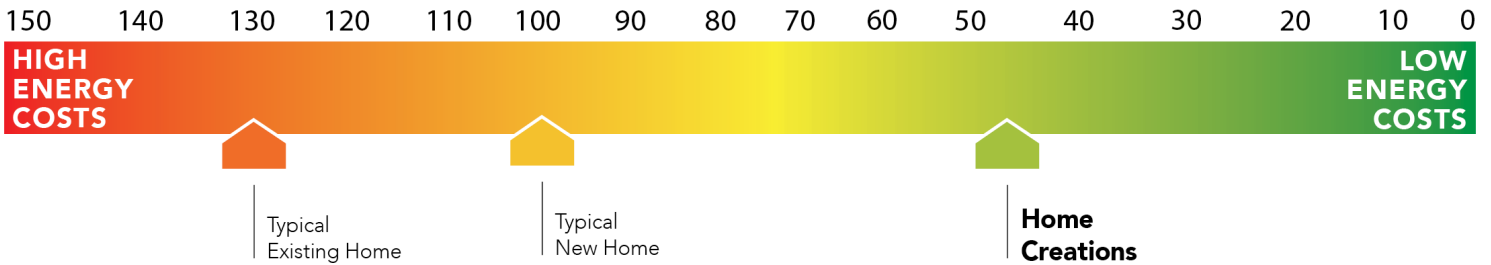


BROOKE OPTIONS



This floor plan with a HERS Index Rating of 49 is:

- 51% more energy efficient than a typical new home
- 81% more energy efficient than a typical existing home



Floor plans' specifications, included features, options and elevations are subject to change.





Included Features

Collection: The Wellington Collection Floor Plan: Brooke

Square Feet: 1,876 (m.o.l.) Bedrooms: 3 Bathrooms: 2.0 Garage: 2 Car

Construction / Plumbing / Electrical / Mechanical

Copper electrical wiring
6 mil poly moisture barrier under slab
Electric dryer connection in utility room
Enhanced modified slab on grade foundation
Exterior 2 x 4 stud-grade lumber walls (16" on center)
*Atlas Pinnacle HP42 130 MPH class 3 impact rated shingles with Scotchgard
15.2 SEER electrical central air conditioning (homes with finals after 1/1/ 2023)

Sheetrock screwed to studs/walls
*Uponor AquaPEX tubing for water lines
Heat-taped condensation lines (attic only)
Protective ground fault interrupter circuits
*Air and moisture barrier DUPONT TYVEK HOMEWRAP with 10-year warranty
RG6 Quad-shield cable wiring (at least four category 5e structured wiring)

Bathroom

Undermount sinks
Framed mirrors in all baths
Light over primary bath showers
*Schluter-KERDI Shower System behind all shower walls
Tiled shower walls and tiled-surround garden tub in primary bath

Ceramic tile floor
Price Pfister® bathroom faucet
2 cm granite or quartz countertops with 4" backsplash
One piece tub/shower enclosure in all secondary baths

Interior Finishes

Square corners
Ventless gas log fireplace
Ceramic tile floor in baths and utility
Possible finishes include Satin Nickel, Matte Black, or Oil Rubbed Bronze
Standard wood-look tile selections in living room, dining, kitchen, entry and hall.

Raised 10' ceiling in living areas and Primary bedrooms (trays 9') (on certain single story plans)

Hand textured walls
3" paint grade baseboard and casing
Insulated entry door (panel style may vary)
Wall-to-wall plush cut loop berber carpet with 1/2" 6 lb pad in select areas
Enhanced light package including chandelier, island pendants, coach lights and vanity lights
Ceiling fans in living room and primary bedroom (Box rated and wired for ceiling fans in all other bedrooms)

Inspections / Engineering

Frame Engineered by 3rd Party State-Certified Engineer
HERS Index energy efficiency rating performed twice by 3rd party licensed inspector (every home is tested; score varies per plan & home permit date)

All foundation designs reviewed and stamped by 3rd party state-certified engineer.

Energy-efficiency

LED lights throughout
Continuous eave roof ventilation
96% efficient tankless water heater
R-30 batt insulation in sloped ceiling
Gas heating 96% high efficiency furnace & duct work
Sill seal foam gasket used under exterior framing, against concrete, to reduce air
Low-e Thermalpane tilt-in vinyl windows with screen (U-Factors of .30 or less & SHGC Coefficient with argon gas of .26 or less)

Radiant barrier roof decking
R-44 blown-in insulation in attic
R-8 Perimeter foam insulation at slab
R-8 Insulated and mastic sealed A/C ducts
R-15 blown-in insulation in external walls. Excludes garage
Polycel caulking around windows, doors and joints (energy efficient caulking package)
HERS Index Energy Efficiency Rating performed twice by 3rd party licensed inspector (every home is tested; score varies per plan & home permit date)

Garage

Pull-down attic access in garage (per plan)
Wifi enabled garage door opener with 2 remotes (2-car garages only)

Finished 2-car garage with wall texture, trim and paint

Safety

Carbon Monoxide detectors
Oriented Strand Board (OSB) exterior walls
Tornado Straps that secure perimeter walls to rafters/roof

Installed smoke detectors
Anchor bolts that secure perimeter walls to foundation
Kwikset door hardware, including Smartkey functionality at all exterior doors

Smart Home Features

Keyless smart entry door lock
Occupancy sensor at utility room
1 Electrical outlet w/dual USB ports in kitchen
Wifi Enabled Garage Door Opener with 2 remotes (2-car garages only)
Wifi (4) Switches installed at Garage Coach, Porch, Entry Hall, Primary bedroom *
(Being removed as of 10/1/23 finalized homes)

Occupancy switch at pantry door
Video doorbell with Chime at front entry
1 Electrical outlet w/dual USB ports in primary bedroom
Ecobee® Programmable, Wifi-Enabled, Thermostat with Heat/Cool Auto mode

Exterior Finishes

Full sod
Brick mailbox with cast stone address block
Guttering over entry and AC pad (vary per plan)
Brick exterior with partial siding (varies per plan)

Wellington landscape package
2 Woodford freeze-proof exterior water spigots
Minimum of 2 exterior waterproof electrical outlets

Warranties

Termite company's 5-year warranty
RWC New Home limited 10-year warranty
Manufacturer's limited 30-year shingle warranty

Builder's limited one-year warranty
Manufacturer's limited appliance warranty
Manufacturer's limited heating & cooling units warranty

Kitchen

*Price Pfister® kitchen faucet
3cm granite or quartz kitchen countertops
Tiled backsplash up to the bottom of cabinets
1/3 horsepower sink garbage disposal w/ air switch
Flat panel 30" soft-close upper kitchen wood cabinets (painted/stained)

Water line for refrigerator icemaker
Tiled backsplash up to the bottom of cabinets
Pendant lights over bar or island (select plans)
Undermount single basin kitchen sink (stainless steel)
Disposal switch located beside kitchen faucet on all kitchen islands (per plan)

Buyer's Initials _____ **Buyer's Initials** _____ **Seller's or its Representative's Initials** _____

* Features subject to availability.

Due to constant updates and revisions of our plans, your home may vary slightly from the designs features here. Please consult your New Home Consultant for details.

