



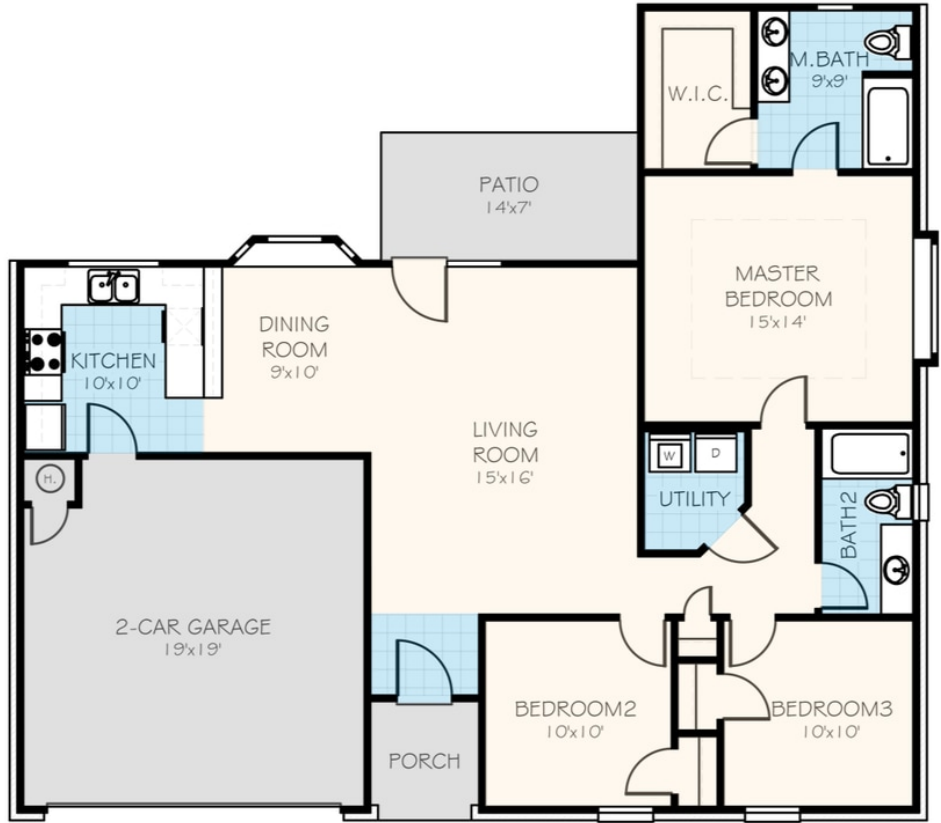
# Leeshire

Collection: The Sonoma Collection Floor Plan: Leeshire

Square Feet: 1,326 (m.o.l.) Bedrooms: 3 Bathrooms: 2.0 Garage: 2 Car



 Elevation A





# Included Features

Collection: The Sonoma Collection Floor Plan: Leeshire

Square Feet: 1,326 (m.o.l.) Bedrooms: 3 Bathrooms: 2.0 Garage: 2 Car

## Warranties

Manufacturer's limited lifetime shingle warranty  
Manufacturer's limited heating & cooling units warranty  
Brick company's limited 100-year warranty  
Termite company's warranty

Builder's limited one-year warranty  
Manufacturer's limited appliance warranty  
RWC New Home limited 10-year warranty

## Safety

Installed smoke & carbon monoxide detectors  
Tornado Straps that secure perimeter walls to rafters  
Oriented Strand Board (OSB) exterior walls

ToughRock 45 Gypsum Board walls and ceilings (except Barrel Ceilings)  
Anchor bolts that secure perimeter walls to foundation

## Energy-efficiency

Gas heating 96% high efficiency furnace  
97% efficient gas tankless water heater (homes permitted after 4/15/19)  
Low-e Thermalpane tilt-in vinyl windows with screen  
Premeter slab insulation  
R-44 Blown-in insulation in attic and RR-15 in exterior walls  
Insulated and mastic sealed A/C ducts  
Eave roof ventilation

Radiant Barrier Roof Decking  
R-8 Perimeter foam insulation under the slab  
House wrap with moisture barrier  
R-19 Batt insulation in sloped ceiling  
HERS Index Energy Efficiency Rating (varies per plan & home permit date)  
Polycel caulking around windows, doors and joints

## Construction / Plumbing / Electric / Mechanical

Category 5 structured wiring  
50-gallon tankless hot water heater (homes permitted after 4/15/19)  
Copper electrical wiring  
RG6 quad shield cable wiring (minimum of 4 cable outlets)  
Protective ground fault interrupter circuits

16 SEER electrical central air conditioning  
Fire rated sheetrock wall & ceiling  
Uponor AquaPEX tubing for water lines  
Electric dryer connection in utility room  
Exterior 2 x 4 stud-grade lumber walls

## Exterior Finishes

Two-car garage with insulated, wind-resistant steel panels, and garage door opener with two remote control openers  
Guttering over AC pad and entry (varies per plan)  
Two exterior frost proof water spigots  
Semi-gloss exterior paint  
Three exterior waterproof electrical outlets

Brick exterior with brick ledge and siding on back with stone trim on front (varies per plan)  
Brick mailbox with cast stone address block (may vary due to location of property)  
Concrete patio (varies per plan)  
Landscaping package

## Interior Finishes

Orange peel texture walls  
Ceramic tile floor in entry, kitchen, dining room, bathrooms and utility room  
Box rated for ceiling fan in all other bedrooms  
Raised 10' ceiling in living areas (in single story plan)  
Insulated entry door (panel style may vary)  
Garage pre-wired for garage door opener

Paint grade baseboards  
Custom light fixture package (includes wiring & installation)  
Ceiling fans in living room and master bedroom  
Wall-to-wall plush cut berber carpet with 1/2" 6lb pad  
Pull-down attic access in garage (in single story plan)

## Kitchen

2 cm granite countertops with subway tile  
USB outlet in kitchen (house permitted after 5/1/2017)

Treviso kitchen faucet in Stainless Steel  
Water line for refrigerator icemaker

1-hole kitchen faucet  
Stainless steel gas freestanding range, over the range microwave and dishwasher (homes permitted after 4/15/19)  
Gas stub in kitchen

## Bathroom

2cm Granite vanity tops with ceramic undermount bowls  
Bathroom hardware in Brushed Nickel or Oil Rubbed Bronze

Fiberglass shower/tub combo in Master & Hall bathroom  
Elongated toilets in bathrooms

Buyer's Initials \_\_\_\_\_ Buyer's Initials \_\_\_\_\_ Seller's or its Representative's Initials \_\_\_\_\_

Due to constant updates and revisions of our plans, your home may vary slightly from the designs features here. Please consult your New Home Consultant for details.

