



NEW HOME CONSULTANT
Lori Kroh
(918) 813-5288 Cell Phone
(918) 832-0999 Model Home

Community: Willow Gorge
Model: 1 mile West of Route 66 & South of HWY
266, Claremore, OK 74019



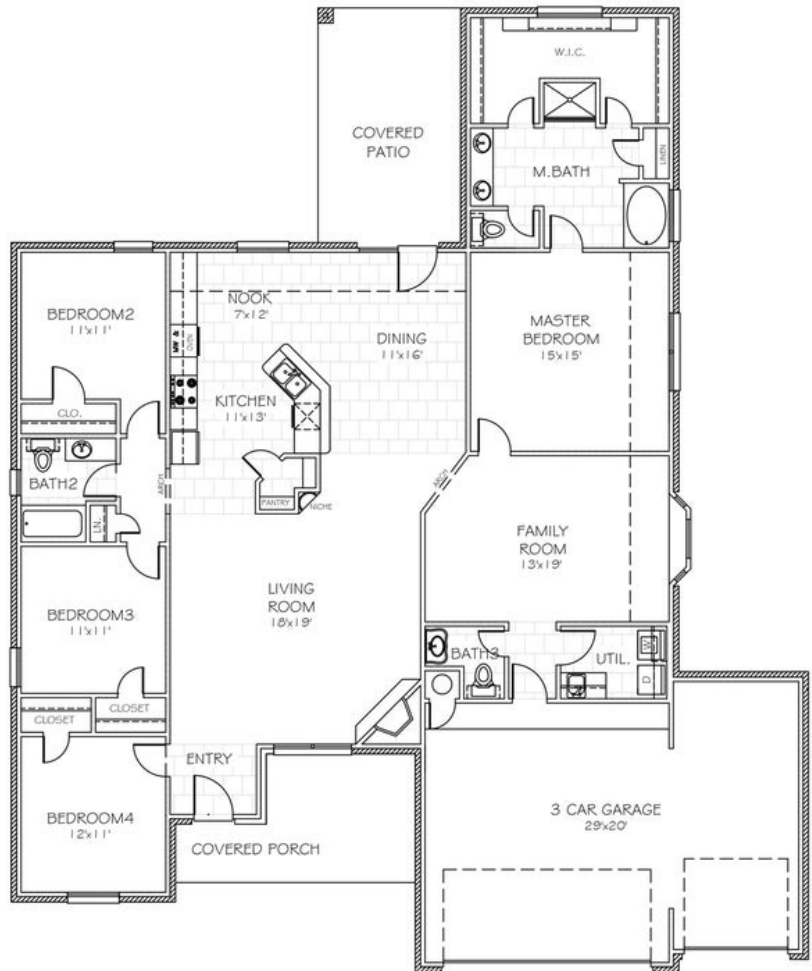
25275 Creek Bank Trail
Claremore, OK 74019

SOLD

Price and availability are subject to change without prior notice. Accurate as of May 04, 2024.

From the Wellington Collection

Floor Plan: Ruby
Square Feet: 2,433 (m.o.l.)
Bedrooms: 4
Bathrooms: 2.5
Garage: 3 Car



The availability and/or features of this plan are subject to change without prior notice. Price of this plan will vary at different communities. Please contact our New Home Consultant for details and available homes with this plan.





Included Features

Address: 25275 Creek Bank Trail **Price:** \$249,990

Collection: The Wellington Collection **Floor Plan:** Ruby

Square Feet: 2,433 (m.o.l.) **Bedrooms:** 4 **Bathrooms:** 2.5 **Garage:** 3 Car

Buyer's Initials _____ **Buyer's Initials** _____ **Seller's or its Representative's Initials** _____

* Features subject to availability.

Due to constant updates and revisions of our plans, your home may vary slightly from the designs features here. Please consult your New Home Consultant for details.





Included Features

Address: 25275 Creek Bank Trail **Price:** \$249,990

Collection: The Wellington Collection **Floor Plan:** Ruby

Square Feet: 2,433 (m.o.l.) **Bedrooms:** 4 **Bathrooms:** 2.5 **Garage:** 3 Car

Buyer's Initials _____ **Buyer's Initials** _____ **Seller's or its Representative's Initials** _____

* Features subject to availability.

Due to constant updates and revisions of our plans, your home may vary slightly from the designs features here. Please consult your New Home Consultant for details.

