



**NEW HOME CONSULTANT**  
**Lori Kroh**  
(918) 813-5288 Cell Phone  
(918) 832-0999 Model Home

**Community:** Willow Gorge  
**Model:** 1 mile West of Route 66 & South of HWY 266, Claremore, OK 74019



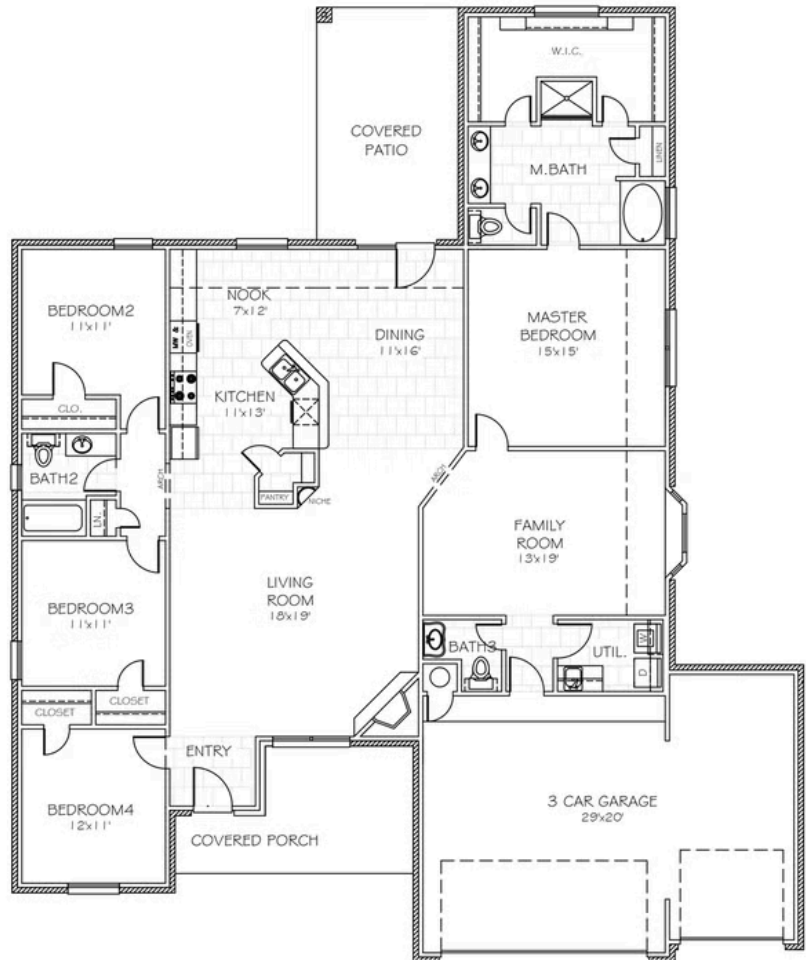
**25275 Creek Bank Trail**  
**Claremore, OK 74019**

# SOLD

Price and availability are subject to change without prior notice. Accurate as of Aug 22, 2025.

**From the Wellington Collection**

**Floor Plan:** Ruby  
**Square Feet:** 2,433 (m.o.l.)  
**Bedrooms:** 4  
**Bathrooms:** 2.5  
**Garage:** 3 Car





## Included Features

**Address:** 25275 Creek Bank Trail **Price:** \$249,990

**Collection:** The Wellington Collection **Floor Plan:** Ruby

**Square Feet:** 2,433 (m.o.l.) **Bedrooms:** 4 **Bathrooms:** 2.5 **Garage:** 3 Car

\* Features subject to availability.

Due to constant updates and revisions of our plans, your home may vary slightly from the designs features here. Please consult your New Home Consultant for details.





## Included Features

**Address:** 25275 Creek Bank Trail **Price:** \$249,990

**Collection:** The Wellington Collection **Floor Plan:** Ruby

**Square Feet:** 2,433 (m.o.l.) **Bedrooms:** 4 **Bathrooms:** 2.5 **Garage:** 3 Car

\* Features subject to availability.

Due to constant updates and revisions of our plans, your home may vary slightly from the designs features here. Please consult your New Home Consultant for details.

