



NEW HOME CONSULTANT
Lori Kroh
(918) 813-5288 Cell Phone
(918) 832-0999 Model Home

Community: Willow Gorge
Model: 1 mile West of Route 66 & South of HWY
266, Claremore, OK 74019



25265 Creek Bank Trail
Claremore, OK 74019

SOLD

Price and availability are subject to change
without prior notice. Accurate as of May 18, 2024.

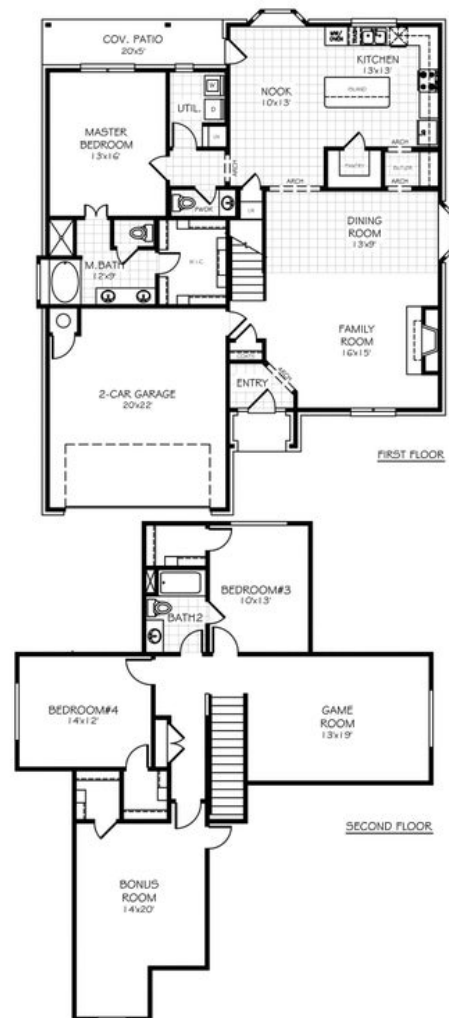
Floor Plan: Cleveland Plus Elite

Square Feet: 2,774 (m.o.l.)

Bedrooms: 5

Bathrooms: 2.5

Garage: 3 Car





Included Features

Address: 25265 Creek Bank Trail **Price:** \$None

Floor Plan: Cleveland Plus Elite

Square Feet: 2,774 (m.o.l.) **Bedrooms:** 5 **Bathrooms:** 2.5 **Garage:** 3 Car

Buyer's Initials _____ **Buyer's Initials** _____ **Seller's or its Representative's Initials** _____

* Features subject to availability.

Due to constant updates and revisions of our plans, your home may vary slightly from the designs features here. Please consult your New Home Consultant for details.

