



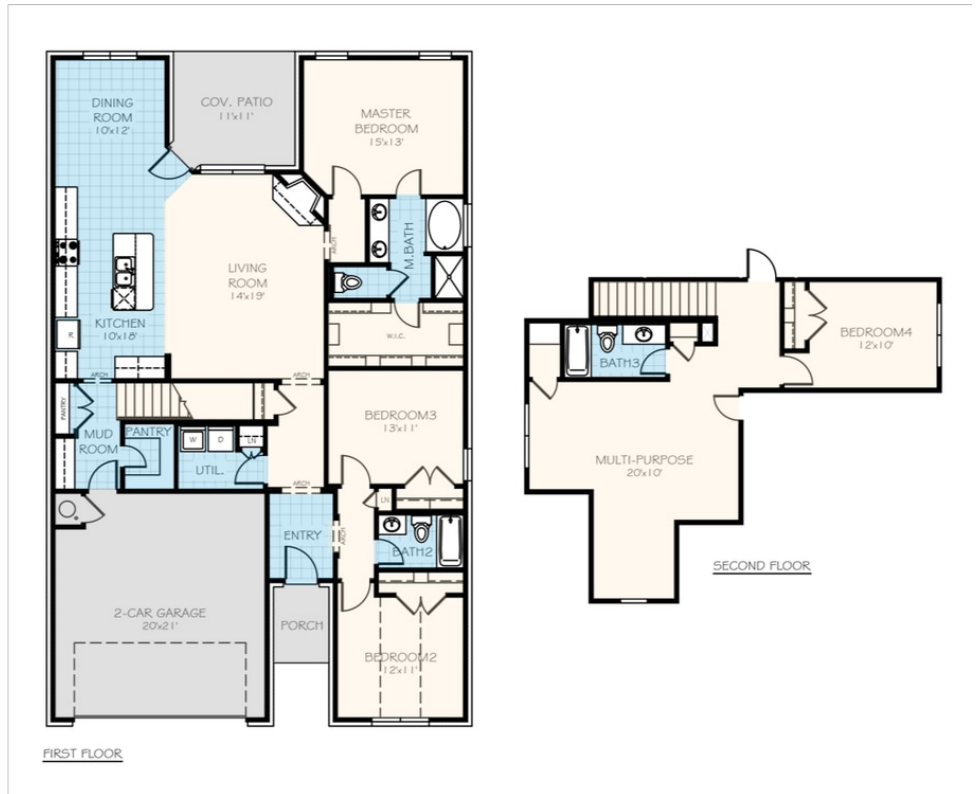
Buchanan Elite

Collection: The Wellington Elite Collection Floor Plan: Buchanan Elite

Square Feet: 2,513 (m.o.l.) Bedrooms: 4 Bathrooms: 3.0 Garage: 2 Car



□ Elevation A





Included Features

Collection: The Wellington Elite Collection **Floor Plan:** Buchannan Elite

Square Feet: 2,513 (m.o.l.) **Bedrooms:** 4 **Bathrooms:** 3.0 **Garage:** 2 Car

Warranties

Manufacturer's limited lifetime shingle warranty
Manufacturer's limited heating & cooling units warranty
Brick company's limited 100-year warranty
Termite company's warranty

Builder's limited one-year warranty
Manufacturer's limited appliance warranty
RWC New Home limited 10-year warranty

Safety

2G Smart Home Touch Screen Security System
ToughRock 45 Gypsum Board walls and ceilings (except Barrel Ceilings)
Anchor bolts that secure perimeter walls to foundation

Installed smoke & carbon monoxide detectors
Tornado Straps that secure perimeter walls to rafters
Oriented Strand Board (OSB) exterior walls

Energy-efficiency

Gas heating 96% high efficiency furnace
97% efficient gas tankless water heater (homes permitted after 4/15/19)
Low-e Thermalpane tilt-in vinyl windows with screen
Premeter slab insulation
R-44 Blown-in insulation in attic and RR-15 in exterior walls
Insulated and mastic sealed A/C ducts
Eave roof ventilation

Radiant Barrier Roof Decking
R-8 Perimeter foam insulation under the slab
House wrap with moisture barrier
R-19 Batt insulation in sloped ceiling
HERS Index Energy Efficiency Rating (varies per plan & home permit date)
Polycel caulking around windows, doors and joints

Construction / Plumbing / Electric / Mechanical

Category 5 structured wiring
Stone trim on front of home per plan (upgraded stucco accent wall available)
Fire rated sheetrock wall & ceiling
RG6 quad shield cable wiring (minimum of 4 cable outlets)
Protective ground fault interrupter circuits

16 SEER electrical central air conditioning
Copper electrical wiring
Uponor AquaPEX tubing for water lines
Electric dryer connection in utility room
Exterior 2 x 4 stud-grade lumber walls

Exterior Finishes

Two-car garage with insulated, wind-resistant steel panels, and garage door opener with two remote control openers
Guttering over AC pad and entry (varies per plan)
Two exterior frost proof water spigots
Semi-gloss exterior paint
Three exterior waterproof electrical outlets

Full brick exterior with stone trim on front of home (varies per plan)
Covered concrete back patio (varies per plan)
Brick mailbox with cast stone address block (may vary due to location of property)
Concrete patio (varies per plan)
Landscaping package

Interior Finishes

Full Blinds
Gas log fireplace or modern style electric fireplace
Paint grade baseboards
Custom light fixture package (includes wiring & installation)
Ceiling fans in living room and master bedroom
Wall-to-wall plush cut berber carpet with 1/2" 6lb pad
Pull-down attic access in garage (in single story plan)

Bullnose corners in common areas (varies per plan)
Paint grade crown molding
Ceramic tile floor in entry, kitchen, dining room, bathrooms and utility room
Box rated for ceiling fan in all other bedrooms
Raised 10' ceiling in living areas (in single story plan)
Insulated entry door with glass insert (panel style may vary)

Kitchen

USB outlet in kitchen (house permitted after 5/1/2017)
1-hole kitchen faucet
3 cm granite or quartz kitchen countertops with travertine backsplash
Under cabinet lighting (on selected plans)

Stainless steel gas slide-in range, built-in microwave and dishwasher (homes permitted after 4/15/19)
Pendant lights over bar (varies per plan)
Undermount stainless steel kitchen sink
Water line for refrigerator icemaker

Bathroom

Garden tub and separate tiled shower with glass doors and acrylic pan in master bathroom
Elongated toilets in bathrooms

Bathroom hardware in Brushed Nickel or Oil Rubbed Bronze
Fiberglass shower/tub combo in hall bath

Buyer's Initials _____ **Buyer's Initials** _____ **Seller's or its Representative's Initials** _____

Due to constant updates and revisions of our plans, your home may vary slightly from the designs features here. Please consult your New Home Consultant for details.

