



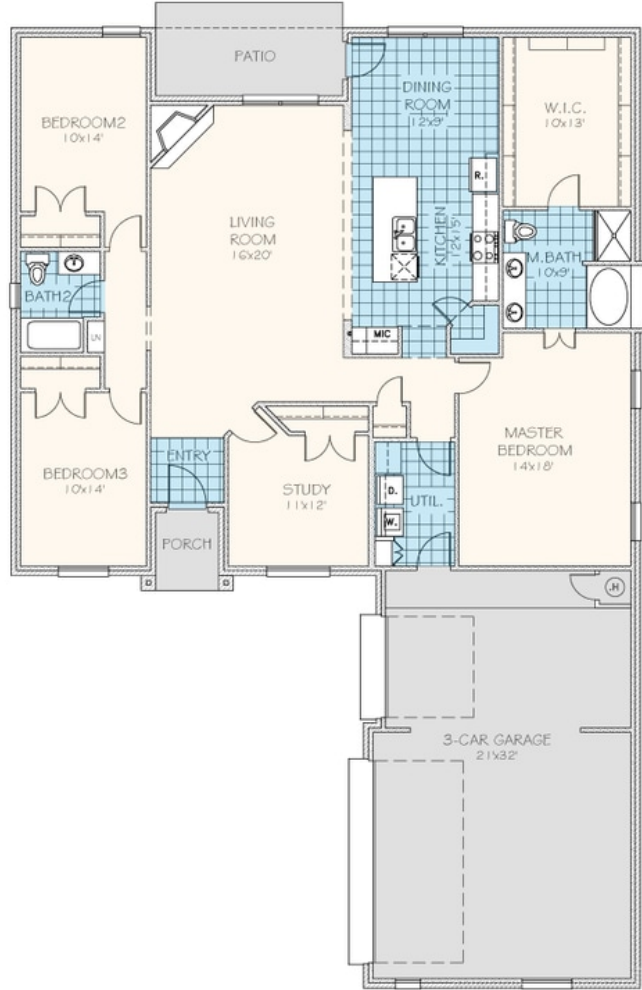
# Brookeside Elite

Collection: The Wellington Elite Collection Floor Plan: Brookeside Elite

Square Feet: 2,054 (m.o.i.) Bedrooms: 4 Bathrooms: 2.0 Garage: 3 Car



 Elevation A





# Included Features

**Collection:** The Wellington Elite Collection **Floor Plan:** Brookeside Elite  
**Square Feet:** 2,054 (m.o.l.) **Bedrooms:** 4 **Bathrooms:** 2.0 **Garage:** 3 Car

## Warranties

Manufacturer's limited lifetime shingle warranty  
Manufacturer's limited heating & cooling units warranty  
Brick company's limited 100-year warranty  
Termite company's warranty

Builder's limited one-year warranty  
Manufacturer's limited appliance warranty  
RWC New Home limited 10-year warranty

## Safety

2G Smart Home Touch Screen Security System  
ToughRock 45 Gypsum Board walls and ceilings (except Barrel Ceilings)  
Anchor bolts that secure perimeter walls to foundation

Installed smoke & carbon monoxide detectors  
Tornado Straps that secure perimeter walls to rafters  
Oriented Strand Board (OSB) exterior walls

## Energy-efficiency

Gas heating 96% high efficiency furnace  
97% efficient gas tankless water heater (homes permitted after 4/15/19)  
Low-e Thermalpane tilt-in vinyl windows with screen  
Premeter slab insulation  
R-44 Blown-in insulation in attic and RR-15 in exterior walls  
Insulated and mastic sealed A/C ducts  
Eave roof ventilation

Radiant Barrier Roof Decking  
R-8 Perimeter foam insulation under the slab  
House wrap with moisture barrier  
R-19 Batt insulation in sloped ceiling  
HERS Index Energy Efficiency Rating (varies per plan & home permit date)  
Polycel caulking around windows, doors and joints

## Construction / Plumbing / Electric / Mechanical

Category 5 structured wiring  
Stone trim on front of home per plan (upgraded stucco accent wall available)  
Fire rated sheetrock wall & ceiling  
RG6 quad shield cable wiring (minimum of 4 cable outlets)  
Protective ground fault interrupter circuits

16 SEER electrical central air conditioning  
Copper electrical wiring  
Uponor AquaPEX tubing for water lines  
Electric dryer connection in utility room  
Exterior 2 x 4 stud-grade lumber walls

## Exterior Finishes

Two-car garage with insulated, wind-resistant steel panels, and garage door opener with two remote control openers  
Guttering over AC pad and entry (varies per plan)  
Two exterior frost proof water spigots  
Semi-gloss exterior paint  
Three exterior waterproof electrical outlets

Full brick exterior with stone trim on front of home (varies per plan)  
Covered concrete back patio (varies per plan)  
Brick mailbox with cast stone address block (may vary due to location of property)  
Concrete patio (varies per plan)  
Landscaping package

## Interior Finishes

Full Blinds  
Gas log fireplace or modern style electric fireplace  
Paint grade baseboards  
Custom light fixture package (includes wiring & installation)  
Ceiling fans in living room and master bedroom  
Wall-to-wall plush cut berber carpet with 1/2" 6lb pad  
Pull-down attic access in garage (in single story plan)

Bullnose corners in common areas (varies per plan)  
Paint grade crown molding  
Ceramic tile floor in entry, kitchen, dining room, bathrooms and utility room  
Box rated for ceiling fan in all other bedrooms  
Raised 10' ceiling in living areas (in single story plan)  
Insulated entry door with glass insert (panel style may vary)

## Kitchen

USB outlet in kitchen (house permitted after 5/1/2017)  
1-hole kitchen faucet  
3 cm granite or quartz kitchen countertops with travertine backsplash  
Under cabinet lighting (on selected plans)

Stainless steel gas slide-in range, built-in microwave and dishwasher (homes permitted after 4/15/19)  
Pendant lights over bar (varies per plan)  
Undermount stainless steel kitchen sink  
Water line for refrigerator icemaker

## Bathroom

Garden tub and separate tiled shower with glass doors and acrylic pan in master bathroom  
Elongated toilets in bathrooms

Bathroom hardware in Brushed Nickel or Oil Rubbed Bronze  
Fiberglass shower/tub combo in hall bath

**Buyer's Initials** \_\_\_\_\_ **Buyer's Initials** \_\_\_\_\_ **Seller's or its Representative's Initials** \_\_\_\_\_

Due to constant updates and revisions of our plans, your home may vary slightly from the designs features here. Please consult your New Home Consultant for details.

