



**NEW HOME CONSULTANT**  
**Audra Brown**  
 (918) 619-5354 Cell Phone  
 (918) 832-0999 Model Home

**Community:** Southridge at Lantern Hill  
**Model:** 6442 East 148th Street , Bixby, OK 74008

**SOLD**



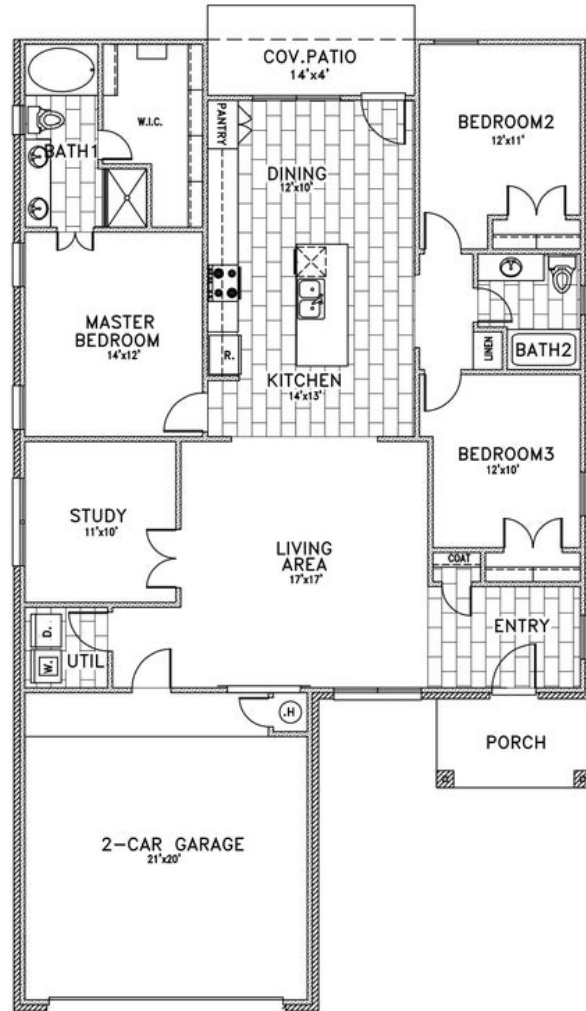
**14761 S Maplewood Place**  
**Bixby, OK 74008**

**SOLD**

Price and availability are subject to change without prior notice. Accurate as of Oct 11, 2024.

**From the Sonoma Collection**

**Floor Plan:** Monroe  
**Square Feet:** 1,710 (m.o.l.)  
**Bedrooms:** 3  
**Bathrooms:** 2.0  
**Garage:** 2 Car





# Included Features

**Address:** 14761 S Maplewood Place **Price:** \$211,469

**Collection:** The Sonoma Collection **Floor Plan:** Monroe

**Square Feet:** 1,710 (m.o.l.) **Bedrooms:** 3 **Bathrooms:** 2.0 **Garage:** 2 Car

**Buyer's Initials** \_\_\_\_\_ **Buyer's Initials** \_\_\_\_\_ **Seller's or its Representative's Initials** \_\_\_\_\_

\* Features subject to availability.

Due to constant updates and revisions of our plans, your home may vary slightly from the designs features here. Please consult your New Home Consultant for details.





# Included Features

**Address:** 14761 S Maplewood Place **Price:** \$211,469

**Collection:** The Sonoma Collection **Floor Plan:** Monroe

**Square Feet:** 1,710 (m.o.l.) **Bedrooms:** 3 **Bathrooms:** 2.0 **Garage:** 2 Car

**Buyer's Initials** \_\_\_\_\_ **Buyer's Initials** \_\_\_\_\_ **Seller's or its Representative's Initials** \_\_\_\_\_

\* Features subject to availability.

Due to constant updates and revisions of our plans, your home may vary slightly from the designs features here. Please consult your New Home Consultant for details.

